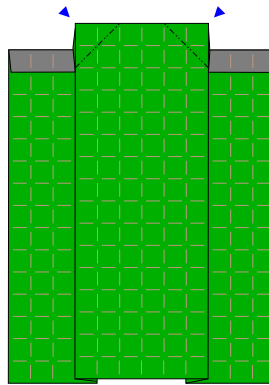
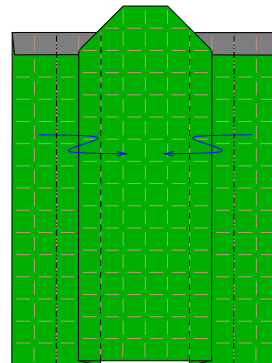


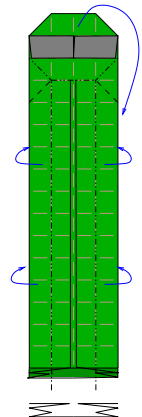
1 Use a bicolor paper
Precrease a 16x16 grid.
Fold as indicated.



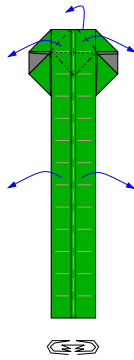
2 Reverse folds..



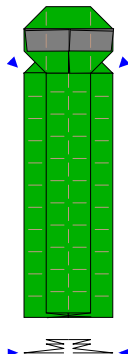
3 Pleat.



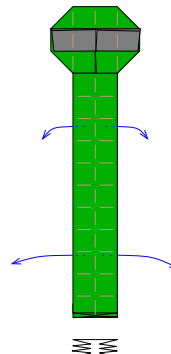
4 Thin while folding head behind..
Bottom line shows paper layers
as seen from above



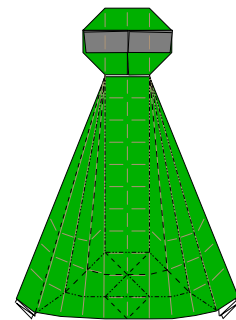
5 Open one layer and
bring head in front.



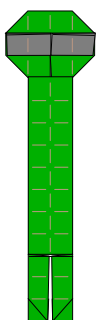
6 Closed sinks.



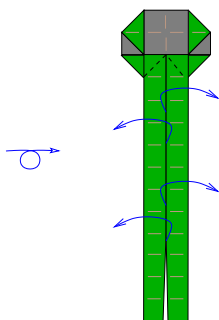
7 Partially unfold the
bottom edge



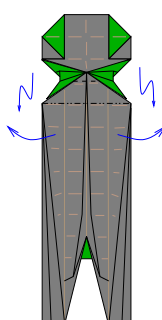
8 Box pleat to form
the legs.



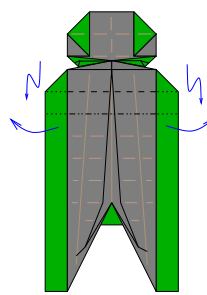
9 Like this Turn.
the model over.



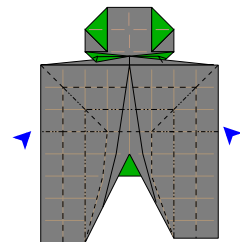
10 Open first three layers.
bottom edge



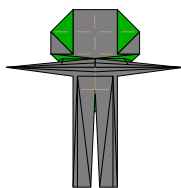
11 Crimp the head while
opening one ,more layer.



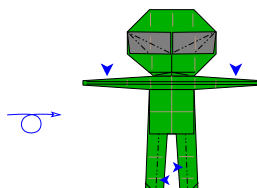
12 Again.



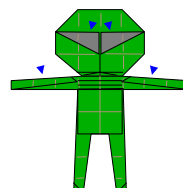
13 Box pleat to form
the arms.



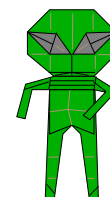
14 Like this. Turn the
model over.



15 Hide paper in the eyes.
Thin arms and legs.



16 Squash fold the eyes.
Shape at taste.



17